

ditions to load (colour, silica fume, etc)
If bagged products (eg: colour, silica fume, etc) are required to be added to a load – only full bags of the dissolvable type can be used.

No bagged or liquid products are to be added to a load on a customer site unless an adequate stand approved by ACM personnel is provided for access to the loading hopper. Selected ACM sites have stands to allow safe addition of bagged and other products. Customers are not allowed to add water to our trucks on site. Our driver is not permitted to add water beyond that required to provide designed slump.

eneral

Additional chutes can not be added to our trucks (only those supplied on truck – no 5th chute)

Trucks manoeuvring on site with extended chutes must be assisted by a spotter.

Customers, contractors and sub-contractors must not climb on the agitator or use the agitator ladder. Excavations / holes are clearly marked.

Safe areas for testing and overnight storage of test specimens are provided.

Provide to ACM a list of any hazardous substances on site with which our drivers / staff may come in contact with.

Be advised with sufficient notice of any changes to site access and delivery areas.

Clear instructions on any other requirements on the site.

roduct Safety Information

Information, including Material Safety Data Sheets (MSDS) can be obtained from your local office or by contacting your Sales Representative.

Customers need to ensure that all personnel who will handle our product are aware of our product awareness and MSDS.

ife Work Practices and Equipment

Any unsafe work practices performed by a ACM representative or unsafe equipment should be reported to your Sales Representative.

SAFE SITE CHECKLIST

SAFE SITE DELIVERY

ITEM	REQUIREMENT
Traffic	Safe access and exit / on and off site
Traffic	Clear access for pedestrians / workers
Traffic	When delivering from road side, traffic control cones & signs supplied by customer
Traffic / Reversing	Spotter required when reversing in high traffic area (vehicular & pedestrian), dark or low clearance areas
Traffic / Pump	Spotter required when reversing to pump
Concrete Pump	Pump has secure safety grate and is parked safely
Plant / Truck	Only ACM driver operates truck and mechanisms
On Site	Delivery area clear of rubbish (slip / trip hazards, sharp objects)
On Site	Chutes locked if moving around the site attached – use spotter
On Site	Adequate lighting for night work
Overhead	Adequate distance from power lines for mixer truck and concrete pump boom (see No Go Zones)
Overhead	Concrete pump earth safety strap in place when working near powerlines
Overhead	Powerlines that could be hazardous to be highlighted with signage, tiger tails, etc
Landfill	Stable ground for delivery
Landfill	Site topography allows easy access (not too steep, or narrow)
Holes & Trenches	Holes, trenches and pits clearly marked
Environment	Level wash-out area available

The above list is to be used as a guide only. Many other hazards may exist on sites



urora Construction Materials

committed to providing a safe working environment for all ACM employees, contractors and their employees, along with ensuring the safety of customers, visitors and the public.

urora Construction Materials

pects that the owner or principal contractor of the delivery site provides a safe working environment.

ues to assist in creating a safe working environment include:

Safe Site Access

Safe and legal entry / exit to the site (including appropriate traffic control on and off public roads, for example lollypop / flag person, witches hats, etc)

Traffic control is only performed by authorised traffic control personnel with the use of appropriate barricades, cones and signs.

A safe route to the unloading point (including adequate signage).

Stable ground surface, as freshly filled ground / cavities can be a hazard for heavy trucks.

A spotter to assist reversing when dark, low clearance or high traffic areas, especially pedestrians.

Delivery point to be clear of any building rubbish or materials.

Safe exit from the site.

If road side delivery is required, that there is a safe area to pull off the road that does not breach any road rules.

All delivery points for tipper are on level and stable ground.

An area is provided to remove covers.

Adequate clearance from powerlines.

Signage / marking of any powerlines that could be hazardous.

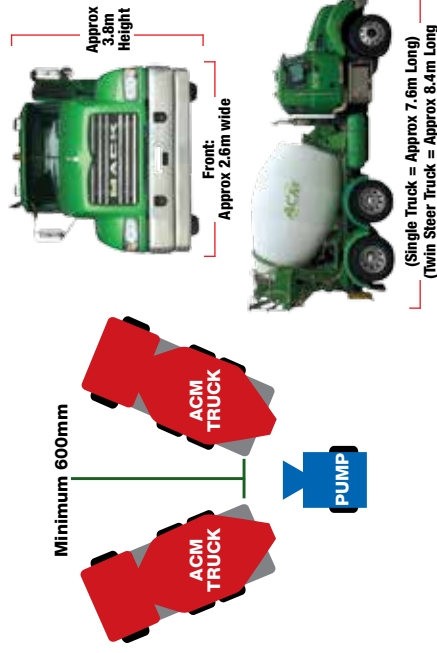
Clear of over hanging structures, including trees.

Environment

- Road side delivery points have appropriate environmental controls (eg: prevention of pre-coat products or concrete washing into waterways, etc)
- Sites have appropriate controls to prevent trucks taking mud onto roads.

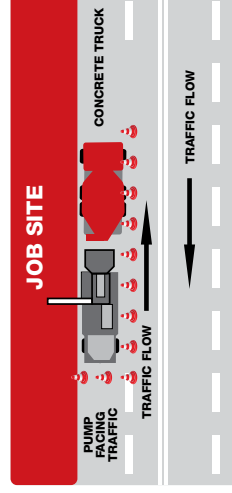
Concrete Pumps and Kibbles

- All safety features are fitted and used on concrete pumps including grates in place, earth straps used, safety chains on discharge elbow, etc. (Note: there is a Code of Practice available for concrete pumps in VIC, NSW and QLD; the Australia Standard AS1418.15 Cranes (including hoists and winches) – Part 15: Concrete Placing Equipment should be used as a reference).
- All safety features are fitted and used on Kibbles. Pump operators must not climb on ACM trucks.
- A spotter must be provided to assist in reversing onto a pump or kibble.
- Where two trucks are required there must be adequate space (600mm minimum) between trucks.



- Pumps must be kept full to avoid blow back.

It is requested that the pump is set up on site so that concrete trucks do not have to breach road rules to reverse up to the hopper. A safe setup is shown below.

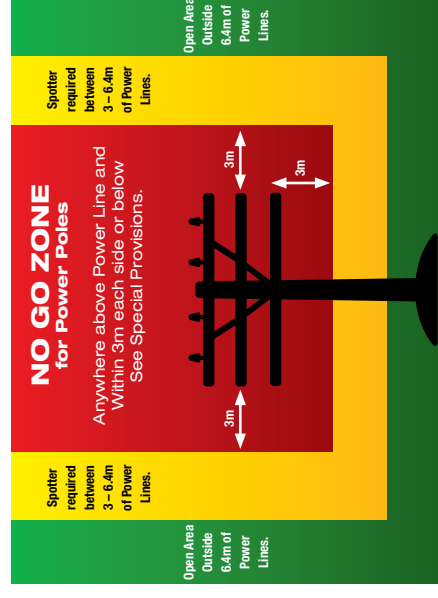


Spreading Loads (Aggregate)

- Spreading will only occur at the discretion of ACM personnel and if safe (eg: on even ground, if the type of material flows safely, if there is adequate clearance from trees / powerlines, etc).
- ACM does not allow loads to be back spread with trailer
- Trucks will only spread with trailer dolly locks in.
- Only ACM personnel can operate the truck (eg: tailgate levers, cover windows, etc).

Electricity

- The following clearances must be maintained from live overhead powerlines / conductors.



nvironment

Safe, level and contained areas provided for concrete agitator wash down.

Delivery times should be arranged so as not to cause a noise nuisance to neighbours of the site.